



# DATA\_LOGGER

Owner	Boardoza
Tags	

## ITEM

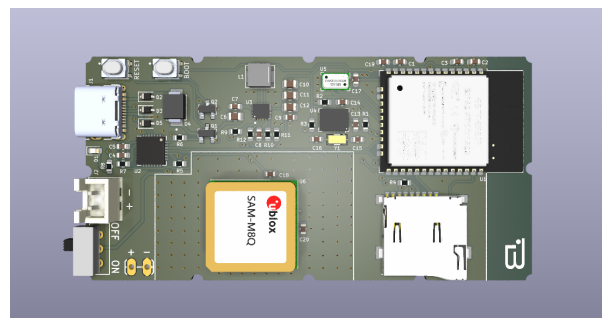
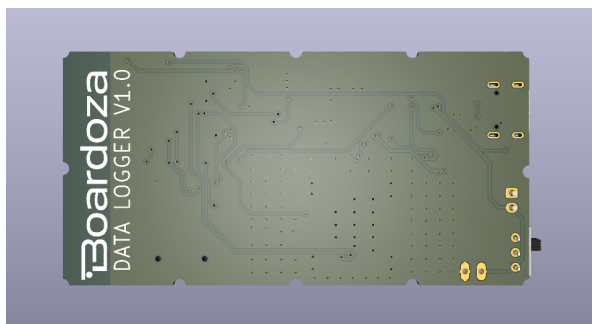


### Information

"With "Bordoza Data Logger" allows you to record data to SD card such as location, 3 axis gyro-acceleration-magnetic field, pressure, altitude, temperature and speed on your kite or rc aircraft etc. You can choose which speed to record; 5 Hz - 10Hz - 30Hz.

**You can make various configuration settings by connecting to the Data Logger via wifi from your phone or computer. You can power it with Type-C cable or Molex 2.50 mm connector or solderable power points.**

## PCB Pictures



---

## Technical Specifications

Item	Data Logger V1.0
Voltage Supply	3V-16V
Functions	Record Data as a; Location , 3 axis gyro-accleration-magnetic field , pressure , altitude , temprature , speed.
Operating Temperature	-40/+85
Board Dimensions	40×80mm

---

## Board Spesific Properties

- **Location sensor is Ublox Sam M8Q,**
  - **IMU sensor is BNO055,**
  - **Pressure and Tempreature sensor is MS5611-01BA03,**
  - **MCU is ESP32 S Module 16MB,**
  - **Regulator is TPS630702RNMT,**
- 

## Board Dimensions

---

## Item Links

---

[SAM-M8Q](#)

[BNO055](#)

MS561101BA03-50

ESP32-S-16-MB

TPS630702RNMT

CP2102N-A02-GQFN28

SD CARD SLOT

SWITCH

TYPE-C

---

## Board BOM

---

DATA\_LOGGER\_BOM.csv

---

## Step Files

---

### Board Step Files

---

DATA\_LOGGER.step

---

### Component Step Files

## Software Files

---

## Revision Notes

---

v1. Released